



SEPTEMBER 11TH MEMORIAL GARDEN
GROSVENOR SQUARE

Design Proposals

November 2002



CONTENTS



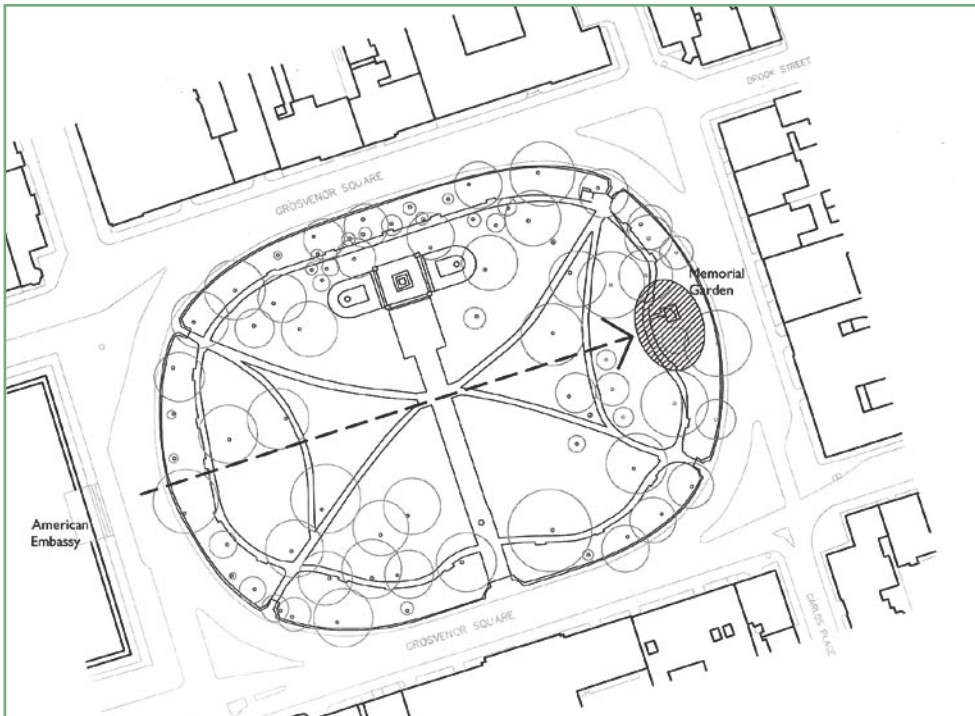
Design Statement
Garden Layout
Pavilion And Pergola
Inscriptions
Planting
Project Details



DESIGN STATEMENT

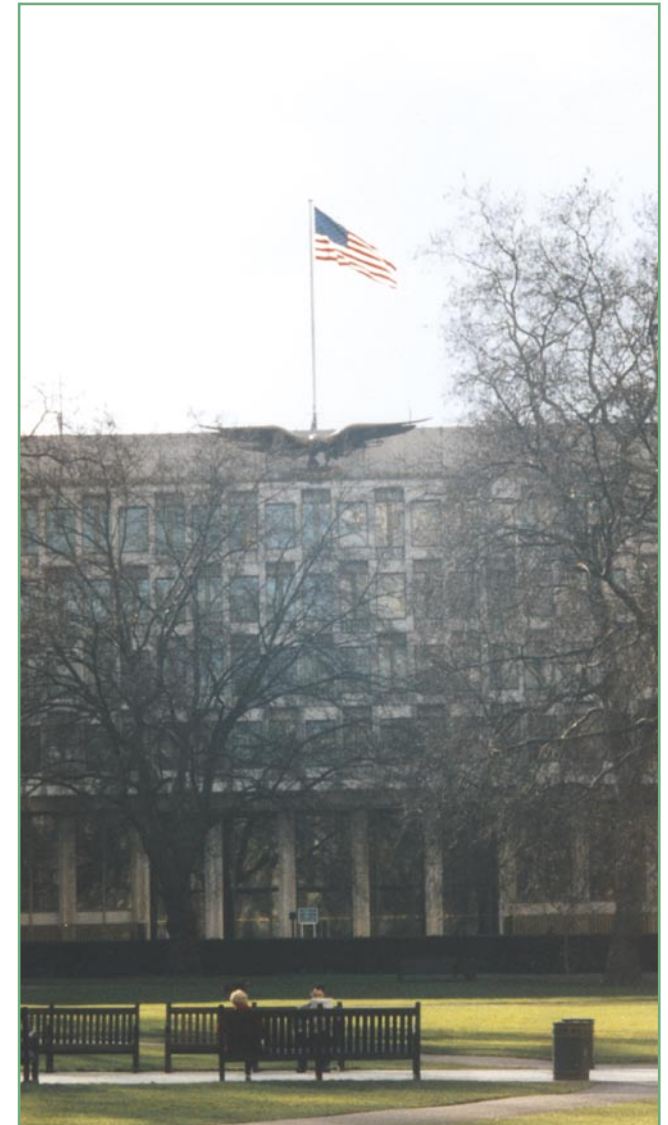
This garden is proposed as a memorial to all those who lost their lives in the United States of America on September 11th 2001.

Grosvenor Square is one of London's finest garden squares, and is home to a number of embassies, including the American Embassy. Placed centrally within Grosvenor Square, and on axis with the American Embassy, the memorial garden will respect the symmetry of the square's historic layout, and will form a new and intimate space for quiet reflection. The design of the garden itself is simple and dignified. Based on the form of an oval, perhaps the most natural of all geometric shapes, the garden will feel calm and tranquil for visitors.



Left: Context Plan

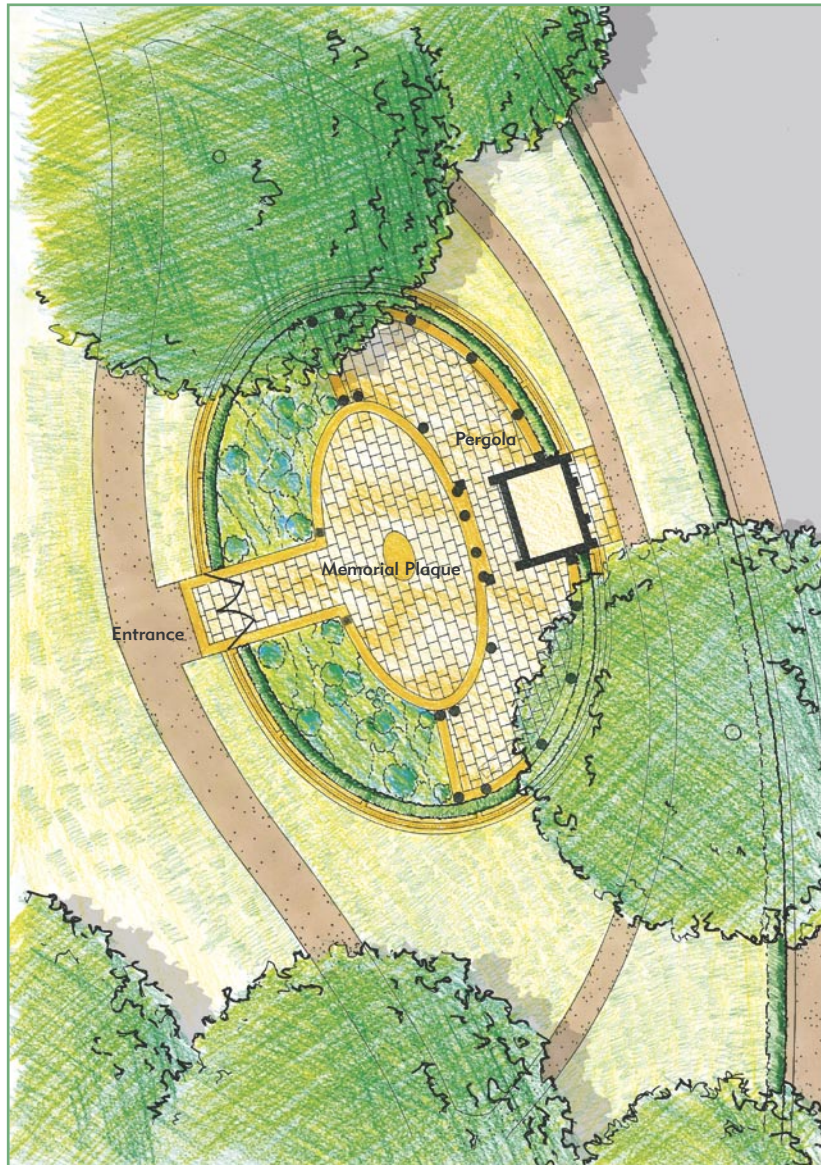
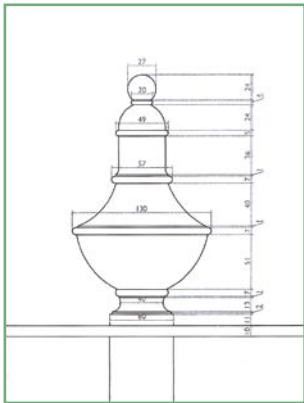
Right: View of American Embassy





VIEW FROM THE ENTRANCE INTO GARDEN

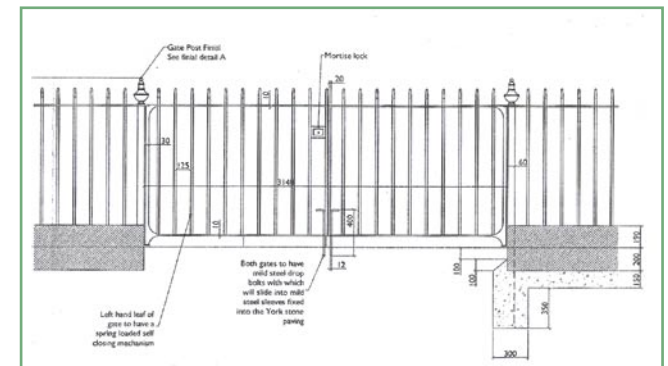
GARDEN LAYOUT



An oak pergola frames the rear half of the garden, providing a shady seating area for visitors. At the centre of this sits a small pavilion. Designed in the form of a small classical temple, it conveys an air of quiet dignity to the garden. The front elevation of the pavilion holds three bronze plaques listing the names of those from the United Kingdom, UK Overseas Territories, and dual nationals who lost their lives.

The paving will be a sawn finish York stone. This stone is warm in colour and is highly durable. At the centre of the paved area, set into the ground, sits a stone plaque that forms a 'universal' memorial to all those that lost their lives.

Two planting beds containing a mixture of shrubs and herbaceous plants frame the entrance to the garden. Set out informally the plants will provide scent and colour throughout the year, with a special focus on mid September to mark the anniversary of the event. A Yew hedge encloses the whole garden and provides a degree of seclusion for visitors whilst still allowing views into the garden from the square.



Above: Gate post finial
 Right: Garden Layout
 Far Right: Railings and gates

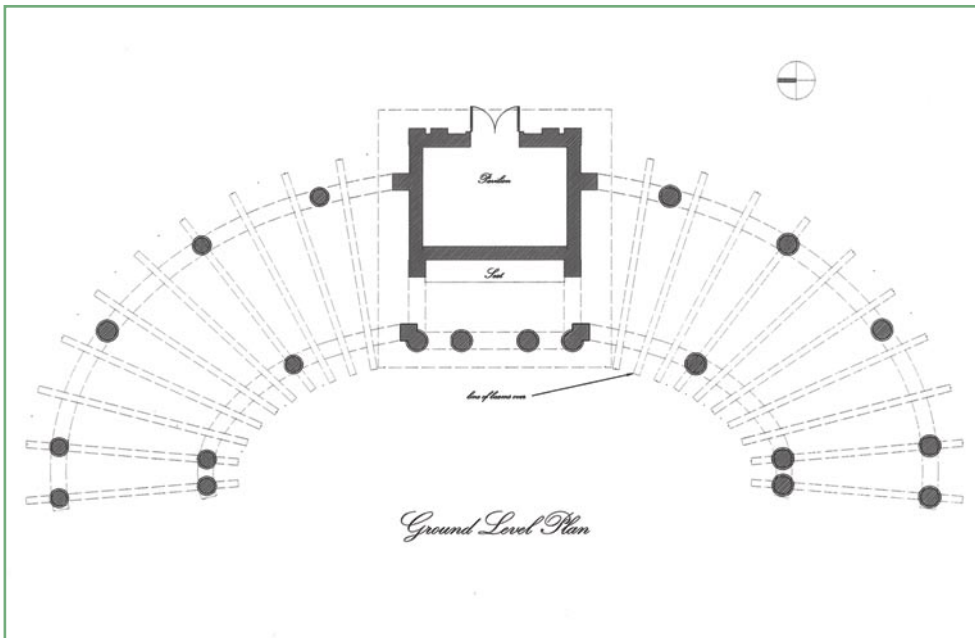
PAVILION AND PERGOLA

The Pavilion and pergola are both constructed in unseasoned or 'green' oak.

The progression in the garden from trees, to pergola, to pavilion reminds us of the origins of architecture in the natural world.

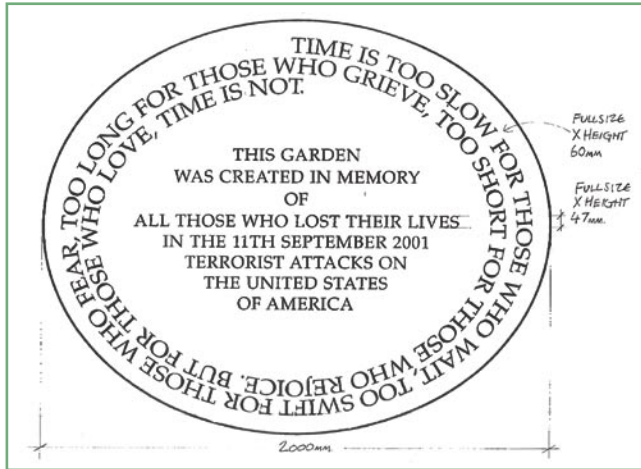
The columns will each be wrought from whole tree trunks and will carry a network of beams over which climbing plants will be trained. The pergola is constructed using slightly more refined materials; planed oak boards for the walls, and lead for the roof. The overhanging eaves of the pavilion will provide shelter in wet weather.

In the most prominent position, on the front of the pavilion, will be the commemorative bronze plaques.



INSCRIPTIONS

CENTRAL PLAQUE

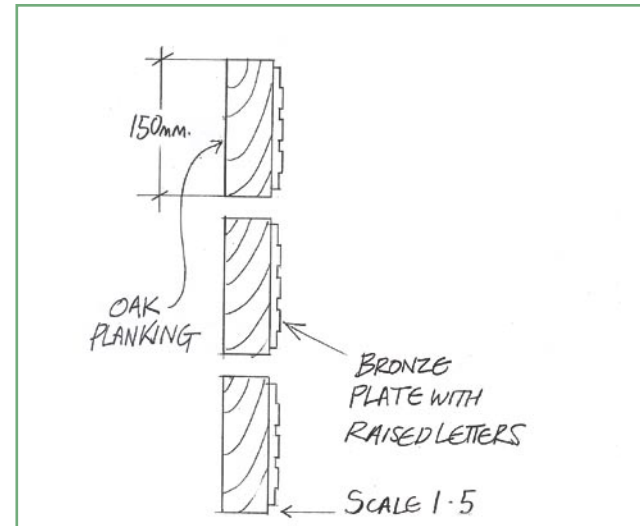
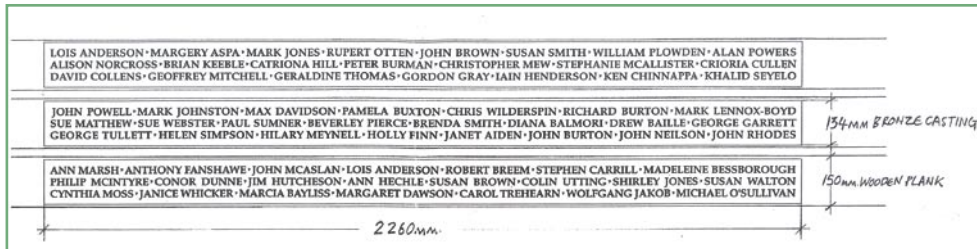


The commemoration of those who lost their lives is at the heart of the garden's design.

The names cast in bronze on the front elevation of the pavilion will be designed by Richard Kindersley, who was responsible for the inscriptions for the memorial gates on Constitution Hill in London and the memorial to the victims of Dunblane. The typical layout here uses fictional names only. However it illustrates clearly the way in which, when arranged as a block of text, the names create a great impact.

Also designed by Richard Kindersley, and at the centre of the garden, is located the universal stone memorial, which remembers all those that lost their lives. A simple statement to this effect is accompanied by a short text from Henry Van Dyke's poem 'For Katrina's Sun-dial', that begins 'Time is too Slow for those who Wait', which was read at the 29 November 2001 service at Westminster Abbey and the 1st anniversary service held at St. Paul's Cathedral. Beneath this stone will be buried a small piece of the World Trade Center from the Ground Zero site.

BRONZES



Top Left: Central memorial
 Far Left 1: Typical layout for names
 Far Left 2: Detail of cast bronze lettering
 Left: Section through bronze plaques

PLANTING

The planting will be informal in character and chosen for its soft colouring, predominantly pink, blue and white. Because the site is dominated by a number of trees, species that look particularly appropriate within a woodland setting will predominate. The planting will consist mainly of herbaceous perennials but a number of 'half-hardy' annuals and bulbs will be included to ensure that the beds are colourful throughout the year. A small number of specimen shrubs will be included, and these along with the Yew hedge that encloses the garden, will give the space a strong framework.

Species may also be chosen because:

- They were included within the Queen's bouquet and floral arrangements at the 29 November 2001 service at Westminster Abbey or the 1st anniversary service at St. Paul's Cathedral;
- They originated in North America;
- They have a symbolic value, such as Rosemary (symbolising remembrance) or Ivy (symbolising fidelity).



Far Left: Foxgloves

Top: Rosemary

Left: Box topiary with Alliums

EARLY SPRING

Camellia japonica

Helleborus orientalis

Narcissus Thalia

Tulipa sp.

Helleborus x sternii

SPRING / SUMMER

Digitalis purpurea

Lilium candidum

Allium

Macleaya cordata

Rosa 'Dainty Dinah'

AUTUMN

Phlox sp.

Penstemon Mother of Pearl

Nicotiana glauca

Aconitum

Anemone x hybrida

PROJECT DETAILS

HOW TO FIND OUT MORE

If you would like more information on the garden, or to discuss the proposals in this document, then please contact **Matthew Ashwood** or **Frances Duffy** at DCMS. Matthew can be reached on **020 7211 6939**, and Frances on **020 7211 6954**. They can also be contacted by e-mail on **matthew.ashwood@culture.gsi.gov.uk** and **frances.duffy@culture.gsi.gov.uk**.



Above: General view of Grosvenor Square

Left: Grosvenor Square in Winter

Below: View towards Roosevelt Memorial



OUTLINE PROGRAMME

- November
- December 2002
- January 2003
- February / March
- May / June
- July / August
- September 11th

main contract is tendered
main contractor is appointed
work on specialist items starts
work starts on site
planting takes place
work is completed
opening of garden

DESIGN TEAM

Client

The Royal Parks

Project Manager / Landscape Architect

Land Use Consultants

Architect

Carden and Godfrey Ltd

Quantity Surveyor / Planning Supervisor

Babtie Murdoch Green

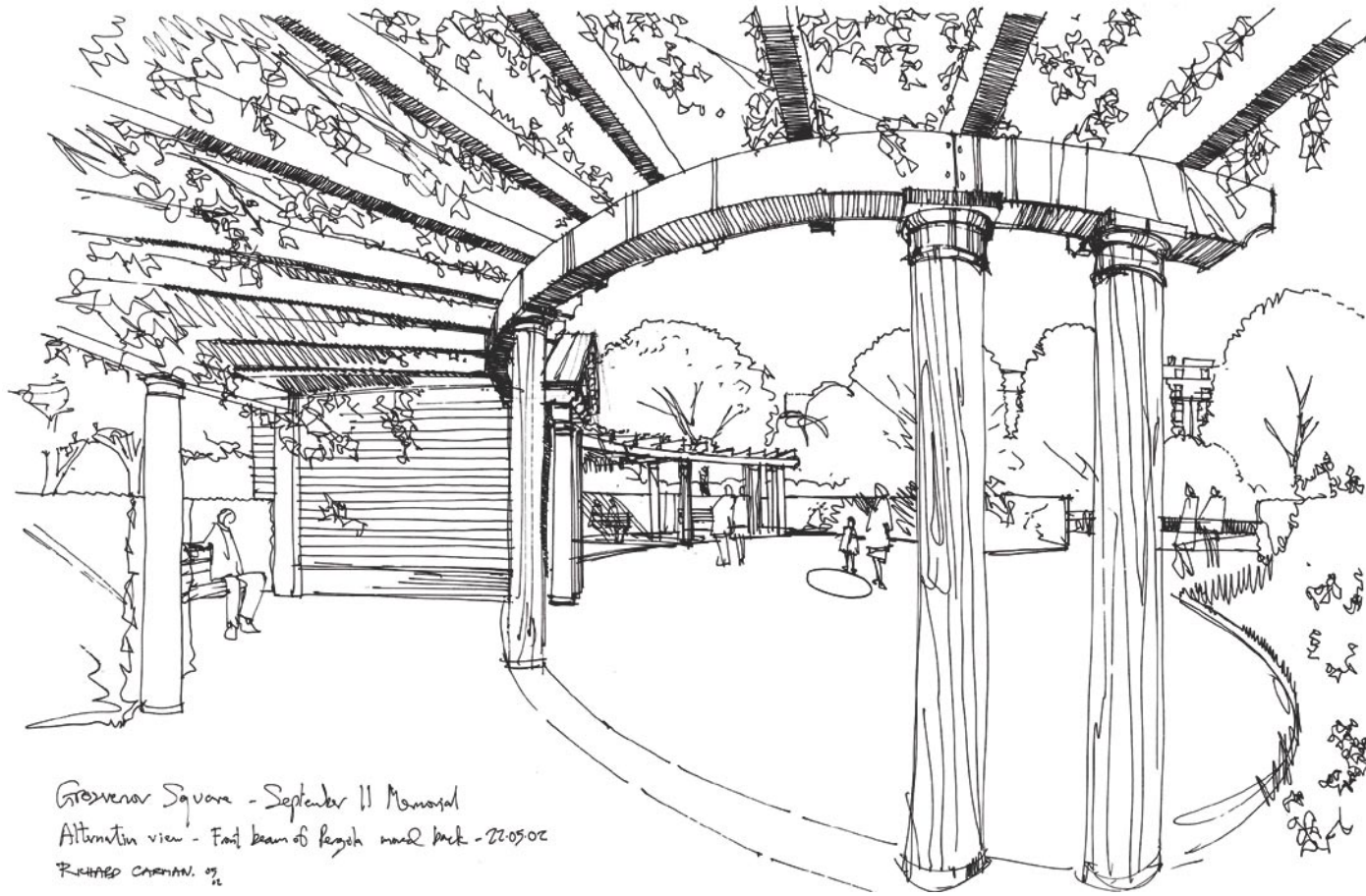
Mechanical and Electrical Engineer

Davies Consultancy

Stone-carver

Richard Kindersley





Grosvenor Square - September 11 Memorial
Alternative view - East beam of length moved back - 22.05.02
RICHARD CARRAN. 02



Prepared by Land Use Consultants in conjunction with the Royal Parks & DCMS